

Cannonball LTD.

1 1/2" SCALE RAILROAD PRODUCTS



Cannonball was founded in 1982. We are continually striving to improve our products. Photos of your finished models are appreciated and will be placed in our online photo album.

All of our kits come with instructions and drawings. We will replace any defective parts, please call for authorization before returning any product.

Orders will be shipped via UPS at the residential rate unless a commercial address is used. A street address is required for UPS delivery. Call for shipping quotes.

To avoid any confusion please use part numbers and descriptions when ordering. Be sure to include your name, address and telephone number with all correspondence. All prices are FOB Oklahoma City. Special orders are subject to an extra handling charge.

ALL PRICES SUBJECT TO CHANGE.

We accept Visa, Mastercard, checks (US funds), money orders, wire transfers and international money orders. Credit cards are charged upon shipment, unless a deposit is required.

Please surf our web site and view over 200 digital photos of our products in the catalog section. Find a club in your area or list yours in the online Club & Association Registry section.

If you don't see it please don't hesitate to ask.

PHONE: 405-524-4400

FAX: 405-396-8335 *(call before sending)*

E-MAIL: trains@cannonballltd.com

WEB: www.cannonballltd.com

www.backyardrailroad.com

CANNONBALL LTD.

11501 East Waterloo Road
Arcadia, Oklahoma 73007

HOURS:

EVERY DAY

10:00am–9:00pm *Central Time*

Visitors Welcome
Call for Appointment



The Box Cab Electric is a free lance model of a typical 1920's locomotive that could have run on any one of the numerous interurban lines that criss-crossed the Midwest and Eastern States. Power is provided by four rugged four brush permanent magnet motors. Each motor is geared to an axle through an enclosed gear box. Control is provided by an electronic solid state controller utilizing the latest technology to provide smooth efficient speed control and dynamic braking. The hand held control box contains a rotating speed control knob, on/off switch, forward/reverse switch, horn button, and bell switch.

Construction is all metal except for decorative hard wood end sills. The chassis is of 3/8" thick steel with a 1/8" thick steel floor. The body is 16 gauge steel with 20 gauge curved steel roof components. Window frames, door frames, and window openings are precision punched in 16 gauge steel. Many of the rivet and assembly holes are prepunched.

Dimensions

Length over couplers	45"
Length over end sills	40"
Width	14 1/2"
Height	20 1/2"
Weight (Less Batteries)	150 lbs.

The body lifts off for easy access to the batteries. The batteries have quick disconnect cables with inline power fuse holders.

No need for an electronic sound system for the Box Cab Electric. The motor/drive system sounds like electric drive. The air horn sounds like a real air horn since it is a three tone air horn with compressor; and the electric bell is a real 8 inch brass bell.

Other details are:

- Cast iron coupler pockets
- Bronze couplers
- Cast aluminum truck bolster
- Commonwealth trucks
- Plexi-glass windows
- Two headlights
- Ornamental roof mounted brass bell
- 17" wheel base for sharp back yard curves

Assembly of the chassis and cab is easy with normal hobbyist tools. A drill press would be desired but not necessary. The trucks and motor assembly will require a lathe. These parts can be purchased assembled as an option.

"BATTERIES NOT INCLUDED"



Cannonball

11501 E. Waterlood Rd. • Arcadia, OK 73007

E-MAIL trains@cannonballltd.com

WEB URL www.cannonballltd.com

(405) 524-4400

FAX (405) 396-8335



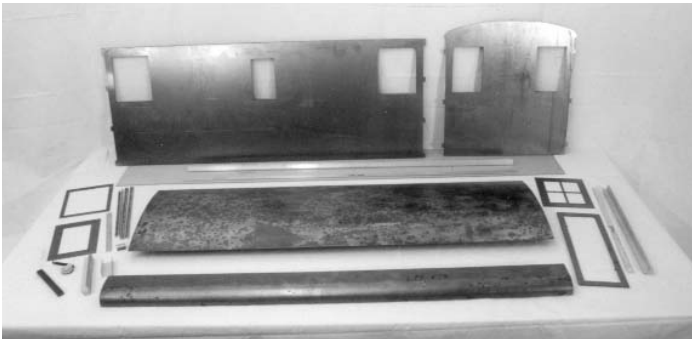
CHASSIS KIT

Includes 1/8" thick steel floor, 3/8" x 3" steel sides, cast aluminum truck bolsters, cast iron coupler pockets, bronze couplers, decorative hard wood end sill, assembly hardware.



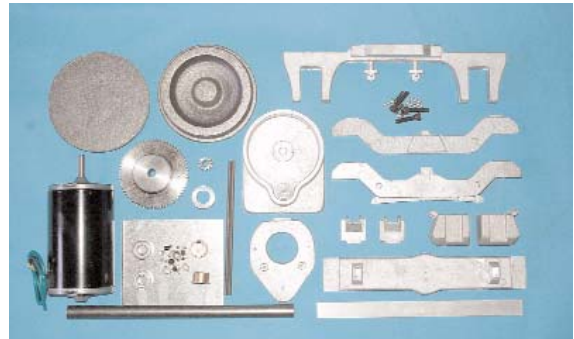
ELECTRICAL KIT

Includes electronic controller with handheld control box, eight inch electric bell. Three-tone air horn, quick disconnect battery cables, fuse holders with fuses, wire and associated hardware.



CAB KIT

Includes 16ga steel sides, ends, door frames, and window frames as shown. Also has formed steel curved roof sides and roof. Included are two headlight kits, a bell kit, detail parts, rivets, and hardware.



MOTOR DRIVE SYSTEM KIT

Includes pair of commonwealth trucks, four motors, gear boxes, wheels, axles, associated parts and hardware. Shown RTR on page 12.

BOX CAB ELECTRIC

DESCRIPTION	PART NO.	PRICE
READY TO RUN (batteries not included)	13400	\$4920
COMPLETE KIT (all 3 sections)	23400	\$2720
CHASSIS/ELECTRICAL KIT	23401	\$1110
CAB KIT	23402	\$470
MOTOR DRIVE SYSTEM	23403	\$1190
RTR MACHINED MOTOR DRIVE SYSTEM OPTION EXTRA COST. 13403		\$730
CRATING CHARGE FOR RTR BOX CAB		\$150
RTR PAINT	CALL FOR QUOTE	

The Super Mack is a low cost, easy to build, battery powered 1 1/2" scale locomotive. Based on a prototype built in 1921 by the Mack Truck Company for use as a switcher at its Allentown plant along the Philadelphia and Reading Railway Company line. The Mack prototype was powered by two four cylinder, 40 horsepower gasoline engines. Cannonball's Mack is powered by two electric motors deriving their energy from a 12 volt battery.



The Super Mack is powered with two rugged four brush permanent magnet motors. Each motor is geared to an axle through an enclosed gear box. The Super Mack is also equipped with an electronic motor speed controller designed to provide smooth, silent and efficient speed control. Speed, directional control, horn and headlight are all controlled from a hand held control box. We believe there is no finer control system on the market today than this simple, easy to operate Super Mack controller.

The short wheel base permits operation on sharp radius curves. It is ideal for that layout in a small backyard. Headlights provide a powerful beam of light for exciting night running. An electric horn is provided for signaling. A Super Mack typically handles two cars and up to four passengers on light grades and handles steeper grades with less of a load. The Super Mack is small enough to be transported in a car trunk.

Dimensions

Length over couplers	29"
Length over footboards	26"
Width	12"
Height	19"
Weight (Without Battery)	81 lbs.

"BATTERY NOT INCLUDED"

*Shown with RTR detail option.
Includes: grab irons, handrails, air
brake main reservoir tanks.
Locomotive lettering, heralds and
end sill safety stripe decals.*



Cannonball

11501 E. Waterlood Rd. • Arcadia, OK 73007

E-MAIL trains@cannonballltd.com

WEB URL www.cannonballltd.com

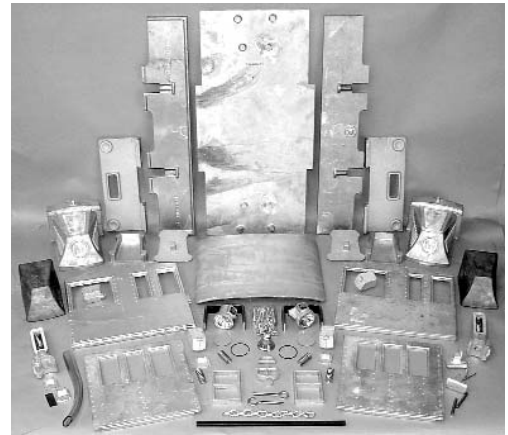
(405) 524-4400

FAX (405) 396-8335



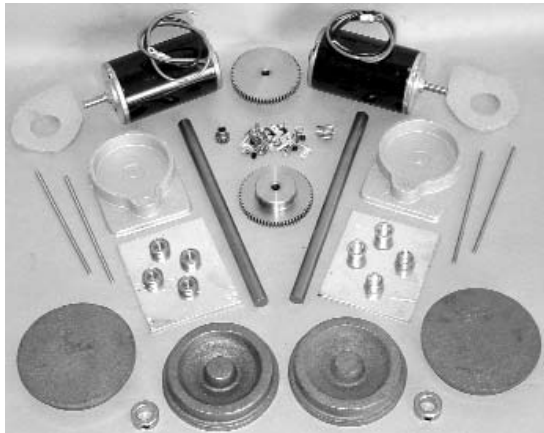
CHASSIS WIRING KIT

This kit includes 12 volt controller, cabling, terminals, switches, connectors, control box, etc. Everything needed to wire a Super Mack. (Shown with ready to run hand held control).



BODY KIT

This kit includes all the alum. castings, headlights (w/number boards), couplers, and bell kits. Anti-rotation brackets, hood weights and hardware.



TRACTION MOTOR KIT

Includes everything needed for two traction motor axle assemblies: motors, gear boxes, wheels, axles, gears, bearings, keys and hardware.



READY TO RUN TRACTION MOTOR

Motors are 12 volt dc, permanent magnet, 3000 rpm 1/3 HP.

SUPER MACK SWITCHER LOCOMOTIVE

DESCRIPTION	PART NO.	PRICE
READY TO RUN (battery not included)	13600	\$2795
READY TO RUN WITH DETAIL OPTION	13601	\$2995
RTR PACKING FEE		\$50
COMPLETE KIT (all 3 sections).....	23600.....	\$1785
CHASSIS WIRING KIT	23601.....	\$675
BODY KIT W/WEIGHTS.....	23602.....	\$700
TRACTION MOTOR KIT	23603.....	\$445
MACHINING OF KIT # 21603	13603	\$225
RTR DETAIL OPTION KIT.....	13602.....	\$175
* SPRING RETURN CONTROL BOX KIT	23606.....	\$80
* SPRING RETURN CONTROL BOX RTR.....	13606.....	\$120

* For retrofitting older Super Macks

Cannonball

11501 E. Waterlood Rd. • Arcadia, OK 73007

E-MAIL trains@cannonballltd.com

WEB URL www.cannonballltd.com

(405) 524-4400

FAX (405) 396-8335

FREIGHT CARS



BOBBER CABOOSE

21 5/8" HIGH x 15 1/2" WIDE x 30 1/2" LONG (85 lbs.)

This welded all steel 4-wheel bobber caboose is a freelance model of a typical caboose that was used on logging, mining and other railroads. Available RTR only. Features: grab irons, handrails, detailed vestibules, steps, ladders, over 400 rivets, aluminum couplers, two-color scheme, powder-coated paint (matte finish \$40 extra), either 7.25 or 7.5 ga w/a assembly.

	<u>PART#</u>	<u>PRICE</u>
30 1/2" RTR BOBBER CABOOSE.....	14500.....	\$1495
PACKING FEE.....		\$50
RTR DETAIL KIT ONLY	14501.....	\$200

Includes: ladders, grab irons handrails, cat walks, and mounting hardware.



STOCK CAR

16 1/2" HIGH x 16 1/16" WIDE x 60 1/4" LONG

This welded all steel stock body car, is a freelance model of a typical stock car that was used on the railroad in the early 20th century. Available RTR only. Features: removable roof, plank simulated wood floor, working doors, coupler release rods, ladders, steps, grab irons, powder-coated paint (call for colors).

	<u>PART#</u>	<u>PRICE</u>
RTR STOCK CAR	14700.....	\$1595
CRATING FEE (shipped truck freight).....		\$150

TRUCKS AND COUPLERS EXTRA

Cannonball

11501 E. Waterlood Rd. • Arcadia, OK 73007

E-MAIL trains@cannonballltd.com

WEB URL www.cannonballltd.com

(405) 524-4400

FAX (405) 396-8335



WORKING / BALLAST HOPPER CAR

12" HIGH X 15" WIDE X 45" LONG

This welded all steel car has two lever operated hopper doors that let you deliver exactly the amount of ballast you need, then spread it with the built in grader blade. The grader blade is latched up out of the way when not in use. With the detachable spreader plate, ballast can be deposited only outside of either or both rails. By using one or more of these cars you will no longer have to shovel ballast from a gondola. When not working on your railroad, these cars will add variety to your freight train.

	<u>KIT PART#</u>	<u>PRICE</u>	<u>RTR PART#</u>	<u>PRICE</u>
45" STEEL HOPPER BODY	24601	\$400.....	14601	\$675
TRUCKS AND COUPLERS EXTRA				



STEEL GONDOLA

7" DEEP X 15" WIDE X 60" or 72" LONG

This welded all steel gondola features die stamped ends and ribs just like the prototype along with a double rolled top edge for safety. Ends, sides and floor are preformed.

	<u>KIT PART#</u>	<u>PRICE</u>	<u>RTR PART#</u>	<u>PRICE</u>
60" STEEL GONDOLA BODY	24101	\$400.....	14101	\$625
72" STEEL GONDOLA BODY	24103	\$425.....	14103	\$650
TRUCKS AND COUPLERS EXTRA				

NOTE: All RTR cars are powder-coated, choose black, red oxide, grey, or white. Matte finish \$20 extra. Cars can be custom painted and lettered, call for quote. RTR packing fee \$50.

Cannonball

11501 E. Waterlood Rd. • Arcadia, OK 73007

E-MAIL trains@cannonballltd.com

WEB URL www.cannonballltd.com

(405) 524-4400

FAX (405) 396-8335

FREIGHT CARS



Shown with optional control stalk and seats.



Shown with optional battery box and seat.

STEEL FLAT CAR

15" WIDE x 60" or 81" LONG

The flat car is a very useful car. It can haul passengers, scale lumber loads, miniature pipe loads, scale truck trailers, etc. Our kit comes with a preassembled welded steel frame, steel side frames, Alum end sills, metal stake pockets, rivets (drive screws), 1/8" thick steel floor and all hardware. Ready to Run flat car steel tops are typically coated with linex (same as used to protect pickup truck beds). Also available with no linex, or with out the steel top, so you can design your own style of top, call for quote.

	<u>KIT PART#</u>	<u>PRICE</u>	<u>RTR PART #</u>	<u>PRICE</u>
60" STEEL FLAT CAR BODY.....	24201	\$490.....	14201	\$700
81" STEEL FLAT CAR BODY.....	24203	\$560.....	14203	\$790

TRUCKS AND COUPLERS EXTRA



ENGINEER CAR

15" WIDE x 36" LONG

This welded all steel short 36" flat car body is the perfect size for an engineer to operate their locomotive. Features: linex coated steel floor, removable adjustable pneumatic seat post, swivel w/ 3° tilt, welded steel pedestal bolts to floor, high back fold down seat.

	<u>RTR PART#</u>	<u>PRICE</u>	<u>RTR PART #</u>	<u>PRICE</u>
36" ENGINEER CAR BODY.....	14199 (less seat assy.).....	\$200	14200	\$350

TRUCKS AND COUPLERS EXTRA

NOTE: All RTR cars are powder-coated, choose black, red oxide, grey, or white. Matte finish \$20 extra. Cars can be custom painted and lettered, call for quote. RTR packing fee \$50.

Cannonball

11501 E. Waterlood Rd. • Arcadia, OK 73007

E-MAIL trains@cannonballltd.com

WEB URL www.cannonballltd.com

(405) 524-4400

FAX (405) 396-8335

DETAILED HOPPER

We have detailed out our 45" RTR Ballast Hopper car. Features: ladders, grab irons, steps, ajax brake wheel & mounting bracket.

PART# 14600.....\$925

RTR Detail Kit & Hardware Only

PART# 14602.....\$200



CONTROL STALK

This bolt to floor control stalk can be moved back and forward, also adjustable up and down. Our design fits the Cannonball hand held control box. We can custom fit your control box, please provide dimensions. Powder-coated.

RTR PART# 33603.....\$100



BATTERY STORAGE CARGO CONTAINER

Features: all welded steel construction, battery bracket bolts down to car floor, can hold two 12 volt batteries, pass through holes for battery cables pre-drilled, powder-coated paint.

RTR PART# 33604.....\$250



FREIGHT CAR SEAT

This welded steel seat fits on our gondola and hopper cars.

Powder Coated.....PT# 33940.....\$30 ea.

Linex Coated.....PT# 33941.....\$45 ea.



FOLD DOWN SEAT

This deluxe high back fold down seat assembly features: bolt-to-floor welded steel pedestal, adjustable height pneumatic seat post with swivel, seat mount with a 3° tilt, hardware included, powder-coated. Seats shown on Flat Cars, page 8.

RTR PART# 14207.....\$150

Cannonball

11501 E. Waterlood Rd. • Arcadia, OK 73007

E-MAIL trains@cannonballltd.com

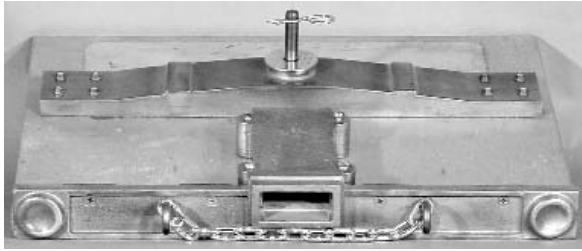
WEB URL www.cannonballltd.com

(405) 524-4400

FAX (405) 396-8335

DO IT YOURSELF FREIGHT CAR KITS

For those who wish to construct their own car almost from scratch we offer two different combination kits. Just add your own floor and body.

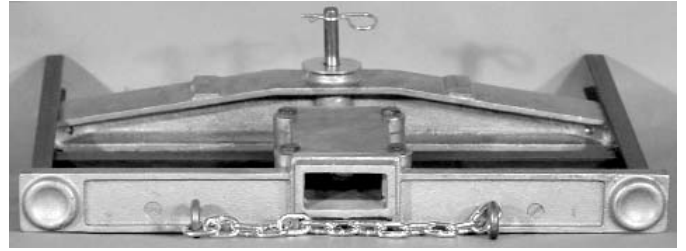


WOOD FLOOR KIT

- Standard Coupler Pockets
- End Sills
- Flat Body Bolster
- Safety Chains & Eye Bolts
- Misc. Hardware

PART # 24904

PRICE \$75



STEEL FRAME KIT

- Standard Coupler Pockets
- End Sills
- I Beam Body Bolster
- 60" Steel Channel Sides
- 3/4" Sqr. Steel Cross Brace
- Safety Chains & Eye Bolts
- Misc. Hardware

PART # 24905

PRICE \$90

COUPLERS



Our Aluminum coupler is cast from a high tensile strength alloy. For those who demand the highest strength, our couplers are also available cast in manganese bronze. Features: Automatic opening, sprung draft gear to absorb shock, self centering for sure coupling, universal design that couples with most other designs, sprung or solid shank. Kits contain all the necessary hardware.

DESCRIPTION	KIT PART #	PRICE	RTR PART #	PRICE
Alum. Sprung /pr.	22120	\$30	12120	\$50
Alum. Solid /pr.	22110	\$30	12110	\$50
Bronze Sprung /pr.	22220	\$40	12220	\$60
Bronze Solid /pr.	22210	\$45	12210	\$65
Alum. Knuckle /ea.	41143	\$2	22130	\$5
Bronze Knuckle /ea.	42107	\$3	22230	\$6
RTR Coupler pin /ea.	47211	\$6
RTR Coupler pivot assy.	34901	\$7

Cannonball

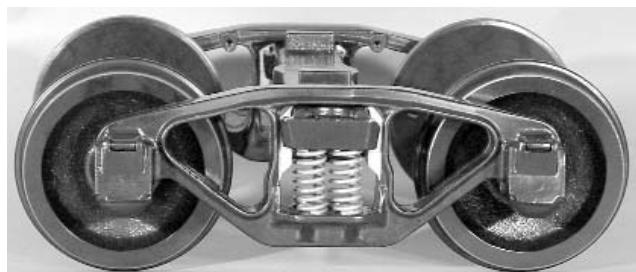
11501 E. Waterlood Rd. • Arcadia, OK 73007

E-MAIL trains@cannonballltd.com

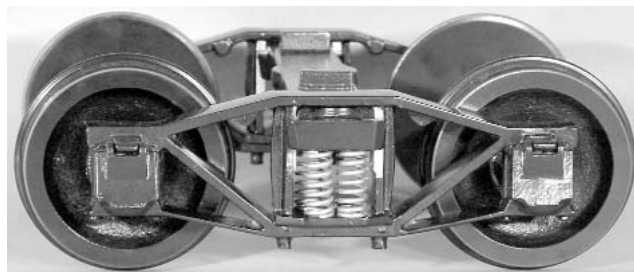
WEB URL www.cannonballltd.com

(405) 524-4400

FAX (405) 396-8335

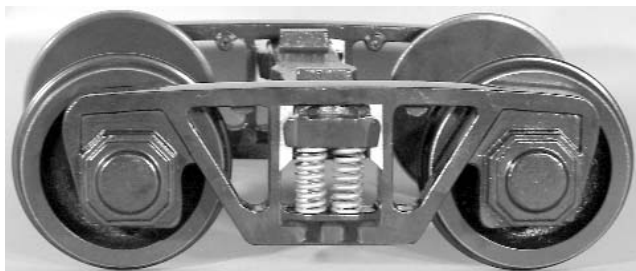


GOULD



ARCHBAR

These trucks are cast from aluminum for the greatest possible detail. Each is equipped with mounting bosses for brake rigging, ball bearings and 8 heavy duty springs per truck. If these are used on a non-riding car or show car, 4 springs may be removed per truck to enable the lighter car to track as well as a heavier car. Wheels are 4 1/8" (33" scale) diameter cast ductile iron with flat backs. Trucks have 5/8" diameter cold rolled steel axles with a wheel base of 8 1/4". RTR trucks are Powder-Coated black or available plain.



ROLLER BEARING

This truck is similar to those above except that being of a more modern style, it does not have journal covers. Otherwise the specifications are the same as above.



IRON GOULD

This truck is exactly the same as the Alum. Gould truck but is cast from iron for extra weight. This extra weight helps light weight cars track better. Specifications are the same as above.

<u>DESCRIPTION</u>	<u>KIT PART #</u>	<u>PRICE</u>	<u>RTR PART #</u>	<u>PRICE</u>
Alum. Gould / pr.	21110	\$225	11110	\$410
Alum. Archbar / pr.	21120	\$225	11120	\$410
Alum. Roller Bearing / pr.	21130	\$225	11130	\$410
Iron Gould / pr.	21140	\$225	11140	\$410

Truck kits available with wheels & axles machined91003..... \$150

(4 axles, 8 wheels, 8 bearings) Powder-Coated or plain.

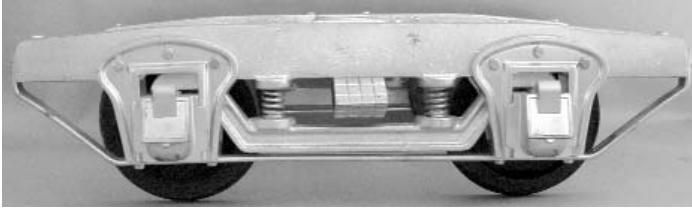
RTR wheel & axle assembly / ea.91005..... \$65

(1 axle, 2 wheels, 2 bearings) Powder-Coated or plain

NOTE: SPECIFY 7 1/2" or 7 1/4" ON RTR WHEEL & AXLE SETS.

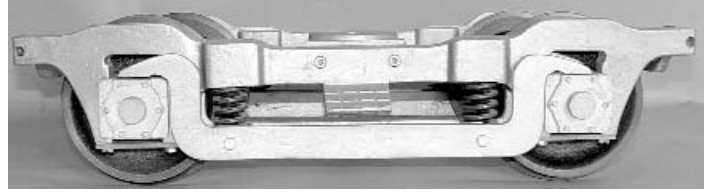
Flat back 4 1/8" wheel / ea.	43106	\$11	43206	\$20
Axle 5/8" dia. x 10 1/2" / ea.	47108	\$2	47208	\$8
7 1/2" wheel & axle gauge / ea.	57207			\$12
7 1/4" wheel & axle gauge / ea.	57208			\$12

Custom RTR wheel & axle assemblies available, call for quote ie: keyed & broched.



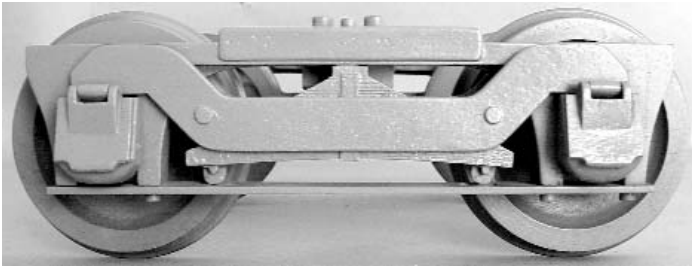
JACKSON & SHARP STYLE PASSENGER CAR TRUCK, CIRCA 1880

One piece frame casting with separate pedestals & ball bearing equipped. Die cast journal boxes with hinged lids. The cast ductile iron wheels are 4 1/8" (33" scale) dia. flat backed. The wheel base is 9".



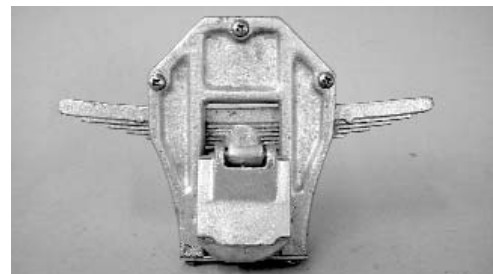
MODERN STYLE PASSENGER CAR TRUCK

This passenger truck has 4 heavy duty springs along with working equalizer bars. This may be assembled by bolting, or welded for extra strength & rigidity. The wheel base is 12".



COMMONWEALTH TENDER

This truck is not sprung, but is equipped with cast simulated leaf springs and hangers, even though unsprung, the fully working equalizers enable this truck to hug the rails. The wheel base is 8".



PEDESTAL & JOURNAL BOX

Our pedestal & journal box kit is ideal for 4 wheel cabooses and old time passenger or freight cars. Cast simulated leaf springs and actual journal box lids to make this a unique and interesting model. 4 1/8" ductile iron wheels.



COMMONWEALTH POWER TRUCK

This truck is used on our Box Cab Electric. All four axles are powered, each with a 12 volt permanent magnet 1/3 H.P. 3000 RPM motor that is geared to an axle through an enclosed gear box. Includes anti-rotation brackets.

Description	Kit Part #	Price	RTR Part #	Price
J & S truck / pr.	21213	\$600	11213	\$1025
Modern truck / pr.	21210	CALL	11210	CALL
Commonwealth truck / pr.	21610	\$325	11610	\$600
Commonwealth Power Trucks / pr.	23403	\$1190	13403	\$1920
Pedestal & Journal Box /pr.	21310	\$120	11310	\$280
P & J castings only	21311	\$70	11311	\$170

(no wheels, axles, bearings)

Truck kits with flat back wheels available RTR	91003	\$150 set
P & J kit available with RTR wheel/axle assembly	91004	\$90 set

Cannonball

11501 E. Waterlood Rd. • Arcadia, OK 73007

E-MAIL trains@cannonballltd.com

WEB URL www.cannonballltd.com

(405) 524-4400

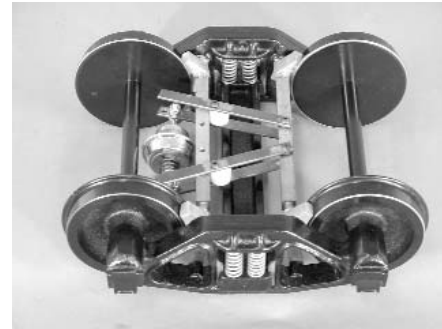
FAX (405) 396-8335

We offer three styles of brake rigging to fit our freight trucks and trucks of other manufacturers (some adaptation may be necessary)



AIR BRAKES

Powered by on board storage tank or by an electric air compressor.



VACUUM BRAKES

For those who already have vacuum brakes on their locomotives and cars, we offer brakes powered by an electric vacuum pump.

STRAIGHT AIR BRAKES

Air on = Brakes applied
Air off = Brakes off

AUTO AIR BRAKES

Operation similar to prototype

- No air in system = No brakes
- Pump up train line to charge air reservoir on each car.
- Air pressure in train line keeps brakes released.
- Reduction in train line pressure applies brakes.
- If train separates brakes go to full emergency application.

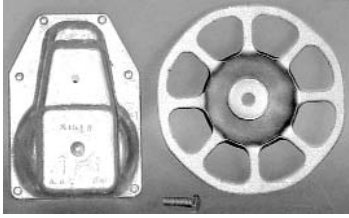


VACUUM PUMP KIT

Kit contains all necessary parts to build a vacuum system.

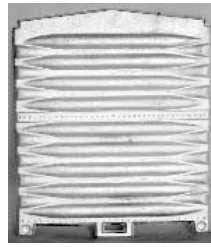
Description	Kit Part #	Price	RTR 7.5 Part #	RTR 7.25 Part #	Price
Vacuum Brake /pr.....	27810 ...	\$120	17810	17811	\$180
Vacuum Pump /ea..	27812 ...	\$270			
Vacuum Pump /ea.	27813 ...	\$300			
(w/ foot control)					
Vacuum Pump /ea..	27814 ...	\$310			
(w/ hand control)					
Straight Air brakes /pr. .	27710 ...	\$150	17710	17711	\$200
Auto Air Brakes /pr	27720 ...	\$205	17720	17721	\$250
All Brake Types installed on trucks /pr.					\$30
Straight & Vacuum brakes installed on car & trucks					\$75
Automatic Air brakes installed on car & trucks.....					\$150

NOTE: RTR MEANS MACHINING IS DONE, BUT SOME ASSEMBLY IS REQUIRED.



Ajax Brake

Zinc & Steel
PT # 44111 \$25
PT # 44111A .. \$10
(Wheel only)



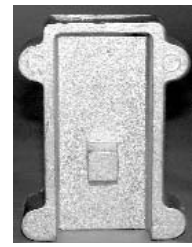
Box Car Ends

Cast Alum.
16" x 15"
PT # 41106 \$140 pr.



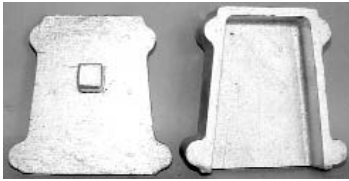
Box Car Door

Cast Alum.
14"x 9 1/4"
PT # 41107 \$70 pr.



Coupler Pocket

Cast Alum.
PT # 41108 \$16 pr.



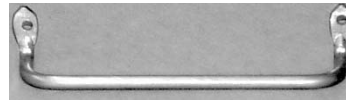
Wide Pocket

Cast Alum.
PT # 22300 ... \$32 pr.



Caboose Markers

Temporarily Unavailable



Grab Iron

1/8 dia. 5/8 x 2
PT# 47102 \$3.50 ea.



Step

2 1/4 x 3 1/4
PT# 59040 \$6ea.



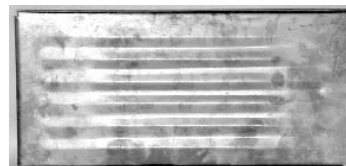
Stake Pocket

Cast Zinc
3/4"x 1 3/16"
PT# 44124 \$2.75 ea.



Freight Car End Sill

Cast Alum. w/ opening for
coupler & poling pockets on
ends 1 1/2" x 15"
PT.# 41109 \$25 pr.



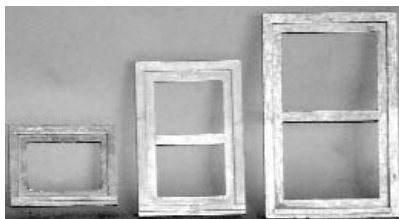
Gondola End

Stamped 16 ga.
Steel 7" x 15"
PT# 46103 \$60pr.



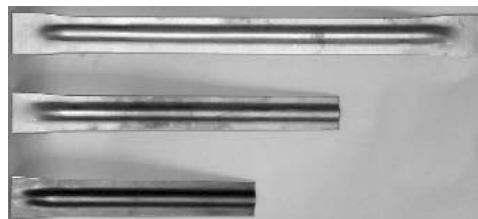
I-Beam Body Bolster

Cast Alum. 1 1/3"x14 1/4"x2"
Kit PT # 24901..\$40 pr.
RTR . PT # 14901..\$60 pr.



Caboose Windows

Cast zinc w/ raised frame & sill
sm. 2 11/16"x 2 1/8"...PT # 44115...\$6 ea.
med. 2 3/4"x 4".....PT # 44114...\$7 ea.
lg. 3 3/8"x 5 3/16".....PT # 44110...\$8 ea.



Freight Car Rib

Stamped 16 ga. Steel
1 1/2" wide x :
9"..... PT# 46104 ... \$3 ea.
12 1/4"... PT# 46111 ... \$4 ea.
16"..... PT# 46114 ... \$5 ea.



Flat Body Bolster

Cast Alum. Flat design to mount
directly to car floor 2"x 14"x1"
PT# 24903 KIT \$30 pr.
PT# 14903 RTR \$60 pr.

RTR Bolster PinPT # 47118\$3 ea.
Journal lid w/pinPT # 41132\$2.50 ea.

Ball Bearing 3/8" ID x 29/32"ODPT # 55307\$4 ea.
Shatz Bearing 5/8 ID x 1 3/8" OD.....PT # 55301\$7 ea.

Cannonball

11501 E. Waterlood Rd. • Arcadia, OK 73007

E-MAIL trains@cannonballltd.com

WEB URL www.cannonballltd.com

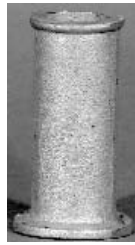
(405) 524-4400

FAX (405) 396-8335



Headlight

2"dia. x 1 3/4"
PT # 23502 KIT \$30
PT # 13502 RTR \$60
(choose number boards)
6 Volt or 12 Volt



Stack

1 1/8" x 3"
PT # 41129
\$8 ea.



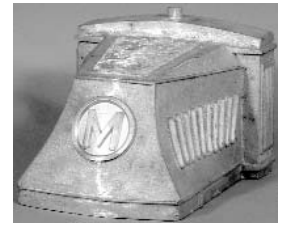
Bell Kit

2 5/8" x 2"
PT # 59024 \$25 ea.
PT # 19024 \$50 ea.



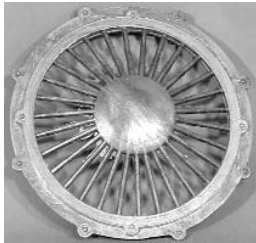
8" Bell Kit

PT # 33902
\$150 ea.



Mack Hood

5 1/2" x 6" x 4"
PT # 41181
\$35 ea.



EMD Fan Grill

5" dia.(36" scale)
PT # 44106 \$15 ea.



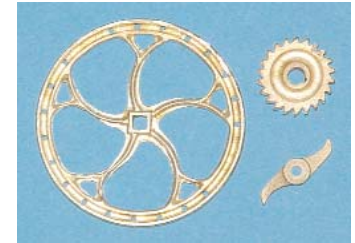
Glad Hands

1 1/8" Long
PT # 44116 \$10 pr.



3 Tone Air Horn w/Brkt.

PT # 33903
\$40 ea.



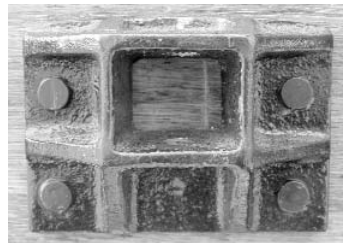
Old Style Brake Wheel

PT # 44112
\$16 ea.



Ladder

2 3/8" x 3 1/2"
PT # 41127 \$7 ea.



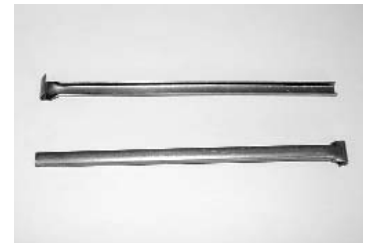
Cast Iron Coupler Pocket

PT # LPS638
\$30 pr.



Brake Band

2 3/4" x 3/4"
PT # 59021 \$7 ea.



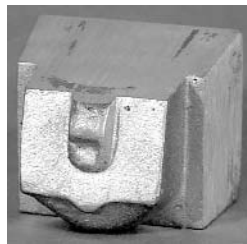
Hand Rail Stanchions

5/16" x 3/8" x 7"
PT # 46101 \$4 ea.



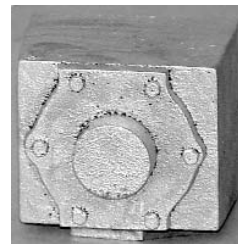
12 Volt Motor

3"dia. 1/10 hp.
PT # 54109 \$75 ea.



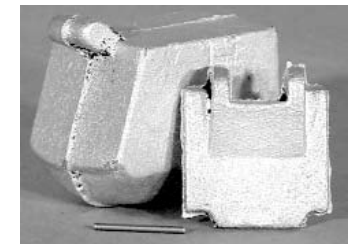
Old Style Journal

1 3/4"x1 1/2"x1 1/4"
PT # 41155 \$10 ea.



Modern Roller Bearing

1 7/8"x1 1/2"x1 1/4"
PT # 41159 \$8 ea.

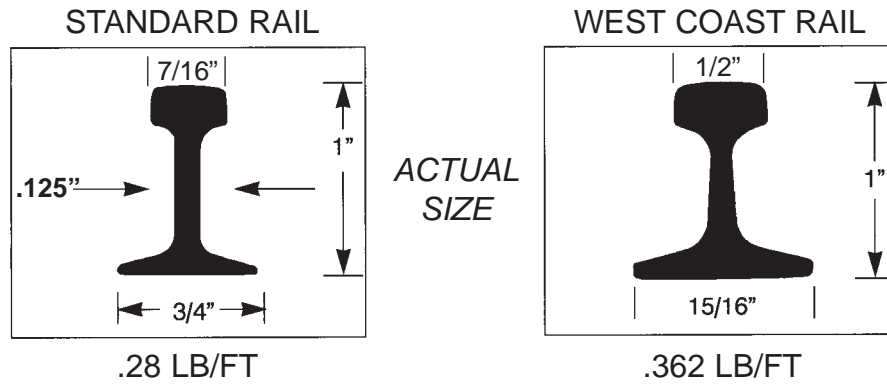


Old Style Freight Journal

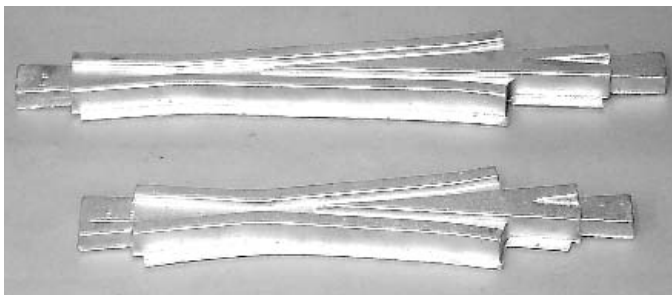
1 1/4"x1 3/8"x1 3/4"
PT # 41208 \$8 ea.

Horn	PT # 53901	\$5	24-36v Power Controller	PT # 54106	\$360
Horn Bracket	PT # 59052	\$5	12v Power Controller	PT # 54105	\$320
Safety Hooks	PT # 59006	\$1	12v Charger kit	PT # 23605	\$20
Safety Chain	PT # 59007	\$1.50	24v Charger kit	PT # 23506	\$30
RTR Brake Drum	PT # 43210	\$25	15 Conductor cable	PT# 53508	\$2 ft.
Brake Drum	PT # 43110	\$7	Centrifical Clutch	PT # 59012	\$30

RAIL & TRACK SUPPLIES



Both our Standard and West Coast rail is stocked in 10' lengths of extruded 6063 aluminum alloy heat treated to a T6 hardness. Our switch frogs are cast aluminum. We have points and frog guard rails machined from our standard and west rail. These items are prototype in appearance and make a good looking turnout. The harp switch stand gives unmistakable indication of point position, readily utilized with 3 way turnouts. The Loco, low profile ground throw switch machines design is such that all adjustments are accessible from the top. This switch machine can be made to operate by remote lever. Our West rail uses a slip-type joiner which allows the rail ends to move freely during expansion, also a tie plate that allows the rail to slide on the tie. Pre-assembled track panels can be connected in seconds. The west system of slip-type joiners is compatible with other rails with a 3/4"-7/8" wide base. With our Standard rail system each rail end is drilled and held together by 2 rail joiners and hardware. Our track gauges hold the rails at 7/ 9/16" with a snug fit on the rail head. We know that 7 9/16" works well for straight and curved rail while fastening rails to ties. Car wheel stops and Bumpers are used at the end of sidings, to keep cars from rolling. The Track leveling tool allows you to check and adjust track level while standing.



DESC.	RADIUS	PART#	PRICE
# 11 FROG /ea.....	120'	41197	\$30
# 8 FROG /ea.	60'	41196	\$21
# 6 FROG /ea.	42'	41195	\$17
# 4 FROG /ea.	15'	41194	\$15
How to Build a Switch Instructions.....			\$10
West frog guards /pr.		26801	\$23
STD. frog guards /pr.		26800	\$23
Steel Switch Point		26702	\$55
West switch points /pr.		26701	\$42
STD.switch points /pr.		26700	\$42
Loco switch kit /ea.		26401	\$70
RTR Loco switch /ea.		16401	\$120
Harp switch stand /ea.		26400	\$32
Harp replacement handle /ea.		41165	\$8
Fold down track bumper /ea.		26904	\$40
Track leveling tool /ea.		26903	\$60
Car wheel stops /pr.		26500	\$15

Cannonball

11501 E. Waterlood Rd. • Arcadia, OK 73007

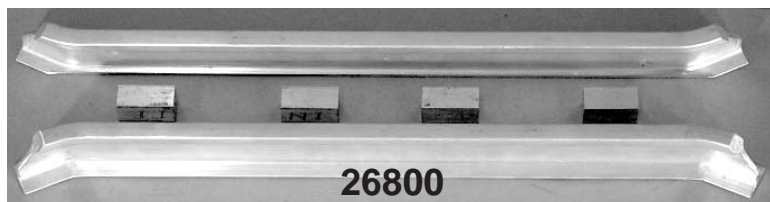
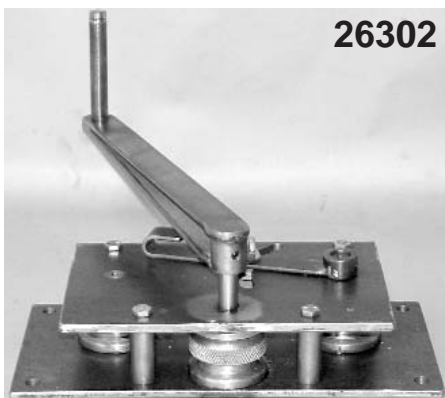
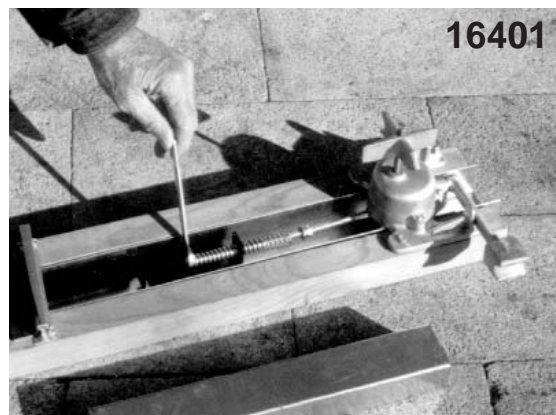
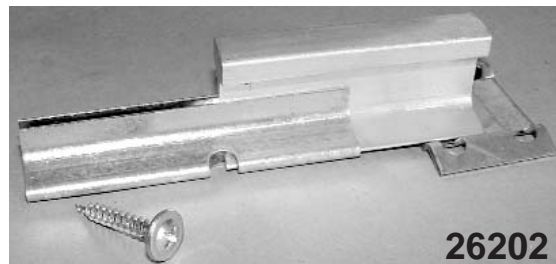
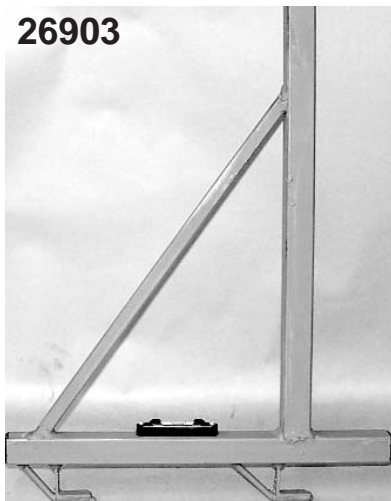
E-MAIL trains@cannonballltd.com

WEB URL www.cannonballltd.com

(405) 524-4400

FAX (405) 396-8335

<u>DESCRIPTION</u>	<u>PART #</u> <u>STANDARD</u>	<u>PRICE/FT.</u>	<u>PART #</u> <u>WEST COAST</u>	<u>PRICE/FT.</u>
250' OR LESS.....	26100	\$.85	26200	\$1.05
250' TO 5000'	26100	\$.80	26200	\$1
5000' OR MORE	26100	\$.70	26200	\$.90
Pre Curved Rail	26101	\$.05	26201	\$.05
<i>(rail curved to est. 40' radius)</i>				
Rail Sample /ea.....	26902	\$2	26202	\$3
Rail Joiner (cut & drilled)	47123	\$.35 ea.		
Std. Joiner Hardware	26901	\$10 per/100		
Slip Joiner /ea.			26300	\$.70
West Tie Plate /ea.			26301	\$.25
Track Screws	26900	\$22 per/1000 ...	26905	\$25 per/1000
Magnetic drive chuck /ea.	59023	\$5	59038	\$5
	(Hex Head)		(Phillips Head)	
Machined Track Gauges .	16900	\$25 set of 3	16902	\$25 set of 3
Un- Mach. Track Gauges	16901	\$15 set of 3		
<i>(specify 7 1/2" or 7 1/4" gauge)</i>				
Rail Bender for both rail types (hand cranked) RTR only /ea.	26302.....			\$620
<i>Rail Benders available for weekly rental, call for info.</i>				



SPRINGS

Spring PT #	SIZE	FORCE	LENGTH	SPRING RATE	PRICE
55203	5/8" x 1"	30 lbs	13/16"	126 lbs / inch	\$1 ea.
55202	5/8" x 1 3/8"	42 lbs	1 1/32"	123 lbs / inch	\$1 ea.
55201	5/8" x 1 5/8"	47 lbs	1 5/16"	138 lbs / inch	\$1.50 ea.

VIDEO

BUILDING A BACKYARD RAILROAD VIDEO (72 mins.) PT# 85000..... \$30 ea.

RAILROAD HERALDS

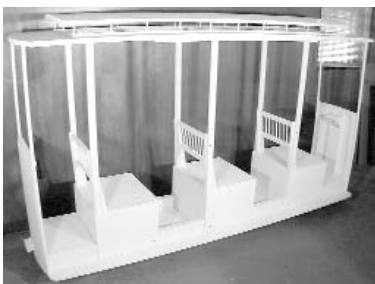
Mylar decals with peel and stick backs. These can make a colorful addition to your rolling stock.

PT# 8100S..... 4" DECAL \$2ea.
 PT# 8100L..... 8" DECAL \$4ea.



CUSTOM LETTERING DETAILS

Custom locomotive and freight car lettering, numbering, pinstriping and details etc. available. Call for quote.



JOLLY TROLLEY

This 3" scale open-style turn-of-the-century street car is constructed out of wood. Canopy is removable for transport and storage or for running where overhead clearance is limited. Minimum track curve radius is 9'. Trolley is 8' long, 2' wide, 4' 4 1/2" high, with a rail clearance of 2". Plans only \$25.

AIR BRAKE COMPONENTS

DESCRIPTION	PART #	PRICE
Manual Pressure Regulator (for modulating line pressure).....	56432	\$21 ea.
Set able Pressure Regulator	56440	\$20 ea.
Quick Connect Assembly	56436	\$5 ea.
On-Off Toggle Switch	56439	\$13 ea.
Urethane Tubing	56403	\$.55 ft.
Fitting 1/8" pipe x 1/8" hose.....	56422	\$2 ea.
Brake Shoe Ring (9 shoes for 4 1/8" dia. wheels).....	41226	\$15 ea.
RTR Brake Shoe (4 1/8").....	41216	\$2.50 ea.
Straight Air Cylinder.....	56437	\$28 ea.
Auto Air Cylinder	56442	\$32 ea.
Vacuum Cylinder	56448	\$25 ea.
Hose Fitting.....	56406	\$.50 ea.



CANNONBALL LTD.
11501 East Waterloo Road
Arcadia, Oklahoma 73007