



Kadee® Quality Products Co.
673 Avenue C
White City, OR 97503-1078
U.S.A.

Tel: 541-826-3883 FAX: 541-826-4013 <http://www.kadee.com> e-mail: mail@kadee.com

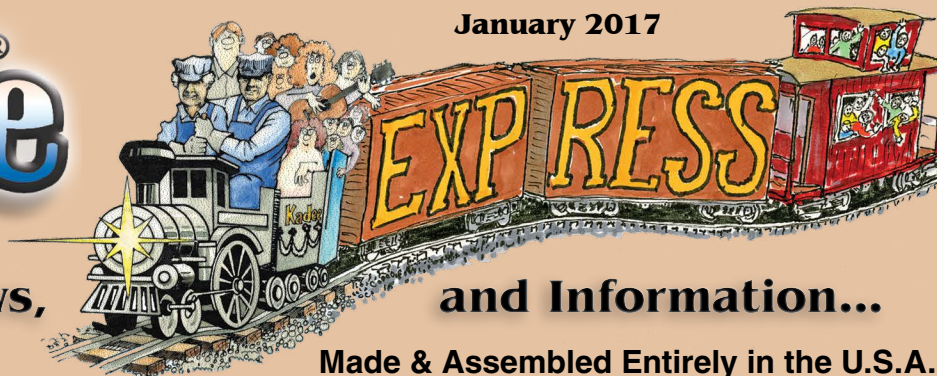
The Coupler People®



The Coupler People®

New Products, News,

January 2017



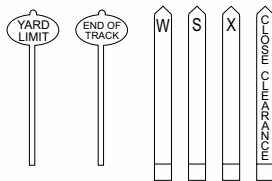
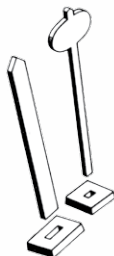
and Information...

Made & Assembled Entirely in the U.S.A.

#426

WHISTLE POST & YARD LIMIT MARKER

CONTENTS: 6 Blank Whistle Posts & Bases, 6 Blank Yard Markers & Bases with optional stick on labels.



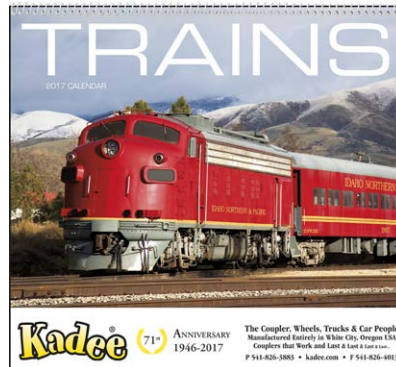
Whistle Post & Yard Limit Marker #426 \$3.95



Kadee 2017 Trains Calendar

\$6.³⁰ Each

Order Your Kadee Product #1 Today



Kadee 71st ANNIVERSARY 1946-2017
The Coupler, Wheels, Trucks & Car People
 Manufactured Entirely in White City, Oregon USA
 Complete that Work and Love it Lasts a Lifetime...
 P 541-826-3883 • kadee.com • F 541-826-4013

January 2017 New Rolling Stock!

Kadee® prides itself in creating and manufacturing premium "RTR" rolling stock as close to scale & detail as possible. Model railroaders can expect only the best quality & craftsmanship with every Kadee® quality product. Nothing stacks up to the accuracy, detail, quality, & authenticity of Kadee® Cars over all other "RTR" cars on the market.



Made & Assembled
Entirely in the U.S.A.



HO-Scale Ready-to-Run Rolling Stock



NEW 4096 ATSF #31382 \$37.95
Lot: 5964 - Series: 31250-31749
Door: 6' - BLT: 1950 - Factory New
Boxcar Red



NEW 5126 CG #7145 \$36.95
Lot: 8030 - Series: 7000-7299
BLT: 1952 - Factory New
Red Oxide

See The Kadee website for additional information.

#817 Plastic Draft Gear Boxes & Lids

For #804, #805, #816 & 740 Series "New Generation" Couplers
CONTENTS: Five Pair Insulating Plastic Draft Gear Boxes and Lids.

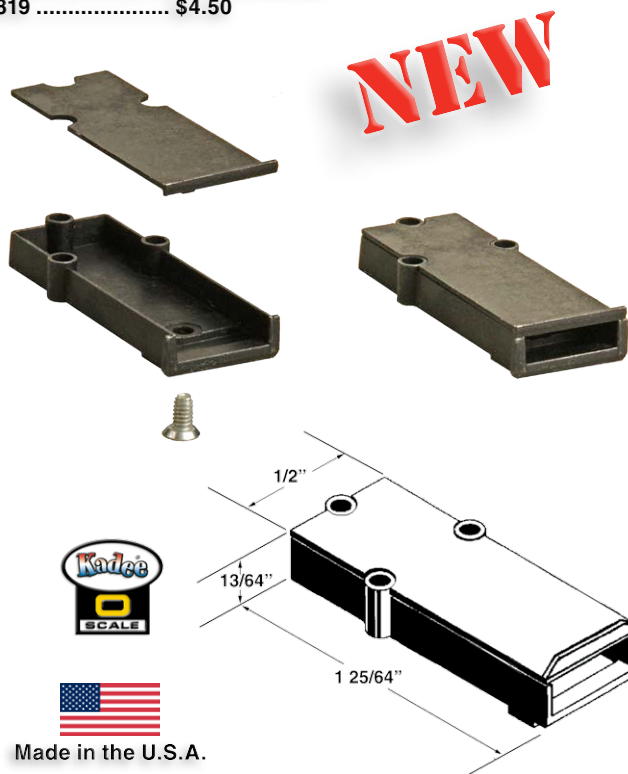
O-Scale Plastic Draft Gear Boxes & Lids
#817 \$3.40



#819 Extended Metal Draft Gear Boxes & Lids

For #804, #805, #816 & 740 Series "New Generation" Couplers
CONTENTS: Four Pair Extended Metal Draft Gear Boxes, Lids & Lid Screws.

O-Scale Extended Gear Boxes & Lids
#819 \$4.50



#818 Metal Draft Gear Boxes & Lids

For #804, #805, #816 & 740 Series "New Generation" Couplers
CONTENTS: Four Pair Metal Draft Gear Boxes and Lids.

O-Scale Metal Draft Gear Boxes & Lids
#818 \$3.75



CNW, DRGW, MKT, MP, SP, SSW, UP, & WP marks are made under trademark license from Union Pacific Railroad Company.

⚠ WARNING: CHOKING HAZARD - Small Parts - Not for children under 14 years.

Lettering similar to cars shown *Subject to change without notice.

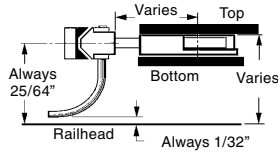
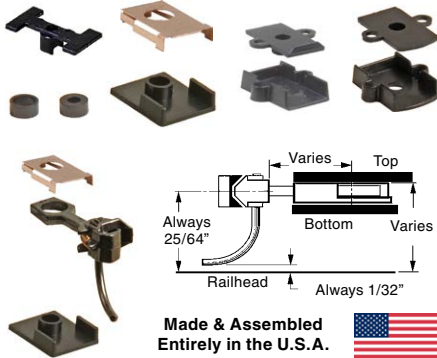
Kadee® Featured Products of the Month

20 SERIES COUPLERS

#21, #22, #23, #24, #25, #26,
#27, #28 & #29 COUPLERS



was \$4.90
\$4.66
Save 5%
2 Pair



Made & Assembled
Entirely in the U.S.A.



5316 TM #8952
Lot: 8344 - Series: 8951-8975
Door: 8' - BLT. 1957 - Factory New
Boxcar red

was \$33.95
\$30.56
Save 10%



7056 CIL #4038
Lot: PS 8168 - Series: 4001-4150
BLT. 1954 - Factory New
Red Oxide

was \$43.95
\$39.56
Save 10%



7057 CIL #4019.....
Lot: PS 8168 - Series: 4001-4150
BLT. 1954 - Factory New
Red Oxide

was \$43.95
\$39.56
Save 10%



8652 FEC #14103.....
2016 Kadee® 70th Anniversary Car
Door: 10' - BLT. 2016
Light Metallic Blue

was \$42.95
\$38.66
Save 10%

Valid 1/6/17 through 2/6/17 online orders only.

Kadee O-Scale Couplers

O-Scale Couplers

1 pair Couplers, with (#845) Coil Knuckle Spring, (#850) Coil Centering Spring, & Draft Gear Boxes.
Coupler & Draft Gear Box Black unless noted.

with Metal (#817 type) Draft Gear Box (same color as coupler)

#805 Medium Centerset Shank Metal Coupler \$4.55 (1 Pair)

with Plastic #817 Draft Gear Box (same color as coupler)

#800 Medium Centerset Shank Plastic Coupler (Rust)..... \$4.45 (1 Pair)

#801 Medium Centerset Shank Plastic Coupler (Brown)..... \$4.45 (1 Pair)

#804 Medium Centerset Shank Plastic Coupler \$4.45 (1 Pair)

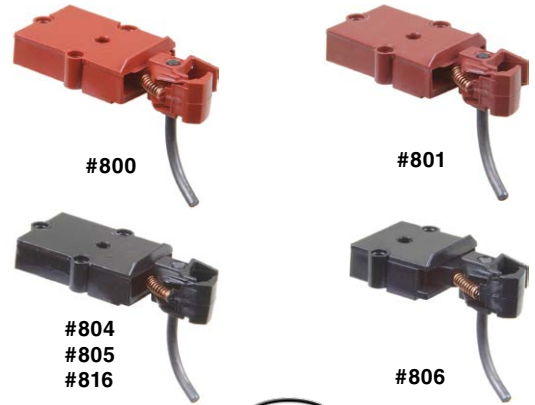
#816 Medium Centerset Shank Metal Coupler \$4.90 (1 Pair)

with Plastic Short Draft Gear Box (same color as coupler)

#806 Short Centerset Shank Plastic Coupler \$4.55 (1 Pair)



Made in the U.S.A.



O-Scale Couplers "New Generation"

2 pair Metal Couplers, with hidden Knuckle Spring, (#850) Coil Centering Spring, & Draft Gear Boxes.
Coupler & Draft Gear Box Black unless noted.

with Metal (#817 type) Draft Gear Box (same color as coupler)

#740 Medium Centerset Shank Metal Coupler..... \$10.10 (2 Pair)

with Plastic #817 Draft Gear Box (same color as coupler)

#742 Medium Overset Shank Metal Coupler..... \$10.10 (2 Pair)

#745 Medium Centerset Shank Metal Coupler..... \$10.10 (2 Pair)

#746 Long Centerset Shank Metal Coupler..... \$10.10 (2 Pair)

#747 Medium Underset Shank Metal Coupler..... \$10.10 (2 Pair)

with Plastic Short Draft Gear Box (same color as coupler)

#743 Short Centerset Shank Metal Coupler..... \$10.10 (2 Pair)



Patent number: 7,810,660 B1

CNWL, DRGW, MKT, MP, SP, SSW, UP, & WP marks are made under trademark license from Union Pacific Railroad Company.

⚠ WARNING: CHOKING HAZARD - Small Parts - Not for children under 14 years.

Lettering similar to cars shown *Subject to change without notice.

Current In-Stock HO-Scale "RTR" Freight Cars

122316

40' PS-1 Boxcars

4000	Undecorated	\$33.95
4096	ATSF #31382	\$37.95
4098	ACY #805	\$34.95
4099	CIL #820	\$36.95



4127	CP #269394	\$36.95
4128	ACY #745	\$36.95
4129	RI #22657	\$36.95
4320	RF&P #2835	\$37.95



4524	AA #413	\$35.95
4525	AA #426	\$35.95
4930	VTR #156	\$37.95
4931	MILW #8754	\$37.95
5125	L&N #5073	\$35.95
5126	CG #7145	\$36.95



5127	A&WP #37951	\$36.95
5199	Undecorated	\$33.95
5200	Undecorated	\$33.95
5316	TM #8952	\$33.95
5317	CNJ #23523	\$35.95
5319	CAGY #170408	\$39.95

Collectors/Specialty Cars



6920 KDC #020 \$39.95



6921 KDC #021 \$41.95

6000	Undecorated	\$33.95
------	-------------	---------



6024 BM #77002 \$36.95

6209 CG #1623 \$38.95



6365 BAR #6004 \$36.95

6369 DHNY #50025 \$42.95



6381 D&H #29178 \$38.95

6383 GTW #309147 \$37.95

50' PS-1 Boxcars

6000	Undecorated	\$33.95
------	-------------	---------



6024 BM #77002 \$36.95

6209 CG #1623 \$38.95



6365 BAR #6004 \$36.95

6369 DHNY #50025 \$42.95



6381 D&H #29178 \$38.95

6383 GTW #309147 \$37.95



6384 ATSF #12573 \$38.95

6385 SAL #15292 \$39.95

6391 P&E #4658 \$37.95

6392 P&E #4630 \$37.95



6741 D&RGW #63672 \$36.95

50-ton AAR "Standard" Open Bay Hopper

7001 Undecorated \$39.95

7002 Undecorated \$39.95

7056 CIL #4038 \$43.95

7057 CIL #4019 \$43.95



7058 P&S #3128 \$42.95



7059 RDG #84000 \$43.95

7501 Undecorated \$39.95

2003 CU FT. PS-2 Hopper

8001 Undecorated \$39.95

8042 SLSF #84036 \$42.95



8043 GN #71482 \$43.95



8044 SOO #6837 \$42.95

8338 NP #75261 \$42.95

8601 Undecorated \$39.95

8652 FEC #14103 \$42.95



8653 B&O #631420 \$45.95

ACF 11,000 Gallon Insulated Tank Car



9009 FBCX #99 \$44.95

Sam's Corner

This series is to help answer the many questions about Kadee® products and to provide "Helpful Hints" to modelers using our products. Sam the Answer Man will only be available after 1:00 p.m. PST Mon-Thu to answer your Kadee® related questions.

Sam the Answer Man: #121 January 2017 "O-Scale Couplers"

We at Kadee® Quality Products hope that everyone had a Merry Christmas and will have a Happy New Year. Please note that we said "MERRY CHRISTMAS" and not Happy Holiday. If that offends someone we have this to say, "get over it", please. We are not trying to offend, we are trying to convey Christ's message of Peace, Kindness, Hope, Tolerance, and above all, LOVE. How and why could anybody get offended at that? That message isn't trying to harm you, change you or your beliefs, there's no threat in those words, nothing to be offended about or be afraid of. If you don't believe in Christ we're not offended, it's your choice and privilege and in some parts of the world it's your right to believe or not to believe as you choose and we have those same rights too. Be happy and Peace be with you through out this coming year.

I continually receive many requests for "O" scale couplers. The problem is that these requests are people wanting the over scale "three rail" Lionel type of couplers and "we do not make or market this type of coupler". Our "O" scale couplers are actual scale size (1:48 scale ratio) and are mostly called "two rail" couplers and they are designed to be mounted on the body of the model and not the trucks.

The Lionel three rail size of O scale couplers are actually close to 1:32 scale which is the same size as our #1 scale couplers (1:32 scale ratio) made for Large scale models like #1 scale, G scale, and Fn3.

We are about to release two "all metal" O scale draft gear boxes as separate retail products. The #818 is our common metal box that comes with our #805 and #740 O scale couplers and the all new #819 is an "extended version" of the #818. It's intended to depict a cushion under frame draft gear box that extends beyond the end of the car body. It uses the same mounting hole design as our other O scale boxes but is about 5/8" longer than the standard box. It also can be used to extend the coupler for extra clearance where needed or desired. These are sold without couplers and will accommodate any of our medium and long shank O scale couplers. The #818 sells for \$3.75 and the #819 sells for \$4.50 both packages contain 4 pair (8 boxes).

We have modelers contacting us for coupler conversion information or coupler selection help. After I talk or converse with them I usually find that the info they need is on our web site but they simply didn't know it was there, how to find it, or how much info we provide. The following link will take you to our conversion pages HO and G scale.

<http://www.kadee.com/conv/convpl.htm> Look through the information and if it does not help or you can't find what you need contact us and we'll see if we can help. Also, most if not all newer HO models come with knuckle couplers factory installed. For these models we may not list them in our conversion info because most are a simple direct change out for our #148 whisker coupler. This applies to many On30 models especially Bachmann that use HO scale couplers on their On30 models.

CNW, DRGW, MKT, MP, SP, SSW, UP, & WP marks are made under trademark license from Union Pacific Railroad Company.

⚠ WARNING: CHOKING HAZARD - Small Parts - Not for children under 14 years.

Lettering similar to cars shown *Subject to change without notice.