



Kadee® Quality Products Co.
 673 Avenue C
 White City, OR 97503-1078
 U.S.A.

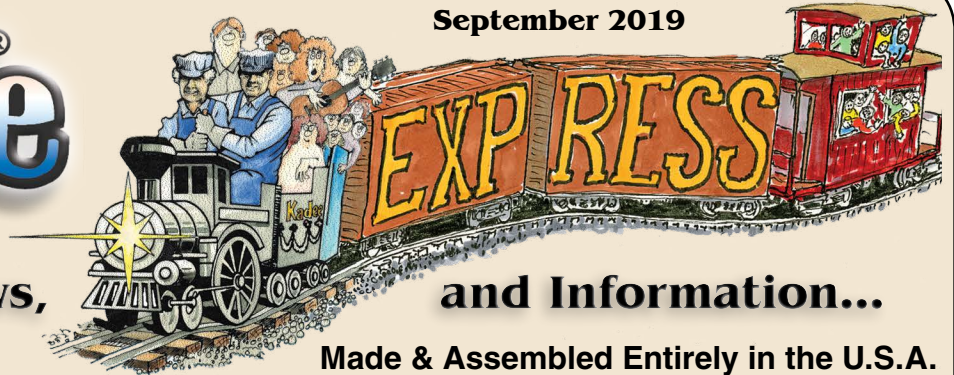
Tel: 541-826-3883 FAX: 541-826-4013 <http://www.kadee.com> e-mail: mail@kadee.com

The Coupler People®



The Coupler People®

September 2019



New Products, News,

and Information...

Made & Assembled Entirely in the U.S.A.

Large Scale Coupler Height Gauges

5 Tools in One



Made in the U.S.A.

#1-Scale



#829 Original Style Coupler
\$20.55 each

#1-Scale



#1929 AAR Type "E" Coupler
\$21.70 each

G-Scale



#880 Original Style Coupler
\$20.55 each

G-Scale



#980 AAR Type "E" Coupler
\$21.70 each

September 2019 New Rolling Stock!

Kadee® prides itself in creating and manufacturing premium "RTR" rolling stock as close to scale & detail as possible. Model railroaders can expect only the best quality & craftsmanship with every Kadee® quality product. Nothing stacks up to the accuracy, detail, quality, & authenticity of Kadee® Cars over all other "RTR" cars on the market.



Made & Assembled
Entirely in the U.S.A.



HO-Scale Ready-to-Run Rolling Stock

NEW



OUT OF STOCK

6411 RF&P #2334\$38.95
Richmond Fredericksburg & Potomac
Lot: 8774 - Series: 2301-2400
BLT. 1963 - Repainted: 1-79
Blue with Silver Door
Cushion Underframe

FUTURE SCHEDULED CARS

October Pre-Order Limited Quantities



This is a sample of what the car may look like.

#6925 KDC #025.....\$43.95
Sample Artwork of the 2019 KDC Christmas Car. **2019 Christmas Car**



#6412 MP #81840.....\$38.95
50' Boxcar - 8' Door, Built 1959, Factory New, Boxcar Red

November Pre-Order



#8341 PRR #257127\$44.95
Covered Hopper - Built 1955, Factory New, Alkali Resisting Light Gray

December Pre-Order



#8342 BM #5535.....\$44.95
Covered Hopper - Built 1956, Factory New, Dark Gray

WARNING: Cancer and Reproductive Harm - www.p65warnings.ca.gov

CNW, DRGW, MKT, MP, SP, SSW, UP, & WP marks are made under trademark license from Union Pacific Railroad Company.

WARNING: CHOKING HAZARD - Small Parts - Not for children under 14 years.

Pre-Order Schedule Subject to change.

Lettering similar to cars shown *Subject to change without notice.

Standing Order Program is simple... You sign up with us to receive a set number of each RTR car we release each month **AND** agree to receive electronic notifications of our Monthly Product Announcements; this is the first notification of which cars are being released for the month.

To sign up for the Standing Order Program, go to the Standing Order sign-up link at kadee.com:

- Number of cars to make for you each month (as little as one each)
- Name and address to ship to, and preference for shipping (USPS or UPS)
- Please indicate if there are any RTR styles that you do not want (40', hopper, tank, etc.)
- All shipments will be billed to open accounts or credit card on file, so if you do not have either of these, please contact us before the standing order program goes into effect.



*** If after the monthly announcement, if you would like to add product to your order OR decline the current released car, you have 5 business days to contact us (electronically via e-mail) to alter your shipment in any way. After the 5th business day, the standing order will be shipped automatically***

New Generation Large Scale Couplers





#1906
New Generation Body Mount
\$9.75

#1906R
New Generation Body Mount
\$9.75





#906
New Generation Body Mount
\$9.75

#906R
New Generation Body Mount
\$9.75




#1904
New Generation Stationary Mounting
\$7.15

#1907
New Generation Truck Mount Centerset
\$9.75




#904
New Generation Stationary Mounting
\$7.15

#907
New Generation Truck Mount Centerset
\$9.75




#1905
New Generation Sill Mount
\$9.75

#1908
New Generation Truck Mount Medium Offset
\$9.75




#905
New Generation Sill Mount
\$9.75

#908
New Generation Truck Mount Medium Offset
\$9.75




#1916
New Generation Bachmann® Loco with Dovetail Shank
\$10.25

#1909
New Generation Truck Mount Large Offset
\$9.75




#916
New Generation Bachmann® Loco with Dovetail Shank
\$10.25

#909
New Generation Truck Mount Large Offset
\$9.75

Current In-Stock HO-Scale "RTR" Freight Cars

082919

40' PS-1 Boxcars

4000 Undecorated\$33.95



4324 SOU #262053\$39.95



5020 CG #8199\$38.95



5021 N&W #53124\$36.95



5022 C&O #17752\$37.95



5128 SAL #24579\$39.95

5199 Undecorated\$33.95

5200 Undecorated\$33.95

50' PS-1 Boxcars

6000 Undecorated\$33.95



6025 BM #77064\$33.95



6361 DTI #18055\$36.95



6379 DHNY #50058\$43.95



6401 IC #12068\$39.95



6404 CNA #794321\$39.95



6405 GTW #794321\$39.95



6406 TS #501\$39.95



6411 RF&P #2334\$38.95



6511 WP #3818\$37.95



6743 D&RGW #63541\$38.95

50-ton AAR "Standard" Open Bay Hopper

7001 Undecorated\$39.95

7002 Undecorated\$39.95

7501 Undecorated\$39.95



7521 GM&O #32801\$42.95



7522 NC&STL #47541\$40.95

2003 CU FT. PS-2 Hopper

8001 Undecorated\$39.95

8601 Undecorated\$39.95



8659 CR #878390\$43.95

ACF 11,000 Gallon Insulated Tank Car



9012 FTLX #207\$44.95



9016 PBGX #36\$44.95



9017 TGX #100\$44.95

Sam's Corner

This series is to help answer the many questions about Kadee® products and to provide "Helpful Hints" to modelers using our products.

Sam the Answer Man will only be available after 1 to 4 p.m. PST Mon-Thu to answer your Kadee® related questions or e-mail him at mail@kadee.com

Sam the Answer Man: #153 September 2019 "BACK TO SCHOOL"

September is usually related to back to school which means school shopping and not model railroad shopping. On the other hand, the kids are back in school giving parents a relief of sorts. This in turn means you can get back to model railroading, right? Perhaps not with all the school activities starting up again requiring parents participation and such. But then you're still spending quality time with your family keeping them close; showing how much you care and love them. Now if you're clever enough after you've helped them with their home work, helped clean up after dinner, you can keep them away from the TV, computers, electronic games, texting, and other useless distractions by getting them involved with model railroading. They need to see you enjoying yourself not only with your hobby but sharing your interests and skills with them and helping them, again spending quality time with them. Your family should be the most important thing in your life. Spending time with them should be the most enjoyable part of your life.

Most of us have things we enjoy that don't involve something electronic where we can actually use our own brain, skills, and experience. These are the things we need to share with the youth of this world and model railroading is one of many. To me, many kids are so dependent upon something electronic that they've lost the desire to even try anything involving manual effort, skill development, or even thinking on their own. Now I'm not against modern technology and electronics at all, but I'm concerned about the abuse and dependence on electronics that seems to be taking over our lives. Can you imagine how lost much of our youth would be if they had to live without any electronic gizmos for even a month including TV, cells, and computers? They'd have to rely on their own memories, skills, and experience, they have to actually think for themselves and use standard methods of communications, like talking and even hand writing notes, postal mail and telephones. The withdrawals would be life threatening I'm sure.

I grew up with party line phones, one channel black and white TV, with antennas, that turned off at midnight, in bed before 9PM on school nights and walking a very long way to and from school. Oh yea a single car and a mom that didn't have to work. My dad built his own house and didn't know how when he began. It was a cinder block house with a basement and you can see his learning curve of laying block from the bottom to the top of the house.

My point is that there is a lack in our youth of common skills, a desire to try, the dependence on electronics for daily life, and the lack of initiative to even notice or care about these things.

That's why we need to have a more close knit family life where we all can better share all we have with others. Provide a secure loving home where our kids really want to come home to knowing it's safe from the world.

Happy model railroading, make it a family experience and share it with others.

Sam the Answer Man will only be available after 1 to 4 p.m. PST Mon-Thu to answer your Kadee® related questions or e-mail him at mail@kadee.com

WARNING: Cancer and Reproductive Harm - www.p65warnings.ca.gov

WARNING: CHOKING HAZARD - Small Parts - Not for children under 14 years.

CNW, DRGW, MKT, MP, SP, SSW, UP, & WP marks are made under trademark license from Union Pacific Railroad Company.

Lettering similar to cars shown *Subject to change without notice.



The Coupler People®

HOn3 Scale Assembled Couplers

#705 - Assembled All Metal Couplers Medium Centerset HOn3 Couplers.

READY TO USE!

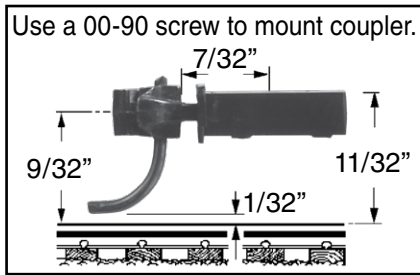


#705 - Assembled Metal "Scale" Head Coupler



Assembled Couplers

Compatible with
Kadee #713 & #714 Couplers.



Assembled Metal Body Mount Couplers

2 pair Assembled Metal "Scale" Head Coupler (Medium 7/32" Centerset Shank), Centering Spring, Knuckle Spring, 00-90 x 3/16" Screw & Insulated Draft Gear Box. (The #705 Metal Coupler will work anywhere a #713 or #714 Coupler will work.) Patent numbers 5,316,158



Made in the U.S.A.

\$5.⁹⁵ 2 Pair

Plastic Body Mount Split Shank Couplers

2 pair Plastic Coupler, with (#636) Coil Centering Spring, & Draft Gear Box. Same as #711 except with shorter length Trip Pin. (KIT) (The #702 Coupler Assembly Fixture can be used to ease assembly)



#713



#714

\$3.⁹⁰
2 Pair



#713 - Plastic Split Shank Couplers (Rust)

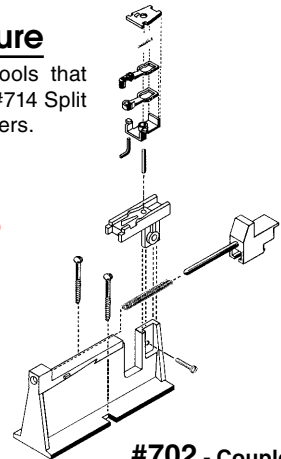
#714 - Plastic Split Shank Couplers (Black)

Coupler Assembly Fixture

Assembly fixtures are innovative tools that will assist you in assembling #713, #714 Split Shank Kadee® Magne-Matic® Couplers.



\$10.²⁵
Each

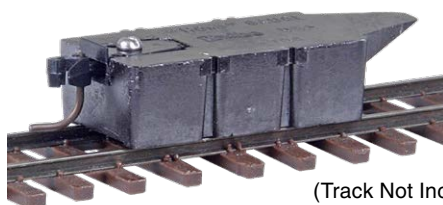


#702 - Coupler Assembly Fixture

Coupler Height Gauge (5 Tools in One)

- 1) Provides instant visual reference of proper coupler height
- 2) Gauges car underbody height from the rail
- 3) Gauges track width
- 4) Gauges wheel width
- 5) Uncoupler gluing jig

\$7.⁹⁵ Each



(Track Not Included)

#704 - HOn3-Scale Coupler Height Gauge

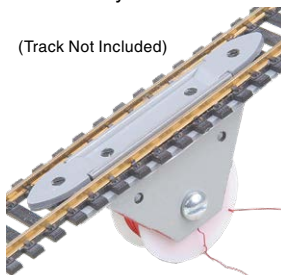


Electric Delayed Uncoupler

#708 "Thru-the-Track" - Fits codes 70, 60, 55 track & other sizes down as small as code 40. Requires: 8-12 Volt DC (Track Not Included)

Use (normally open) Momentary Switches with Electric Uncouplers. Like #163 or #165 Momentary Quickie Switches

(Track Not Included)



\$15.⁹⁵
Each



#708 - Between-the-Rails

Delayed Uncouplers

(Track Not Included)



\$6.²⁵
Each



#709 - Between-the-Rails

Metal Fully Sprung Fully Equalized Truck

Unassembled Metal Freight Truck with 26" Ribbed back wheels
(Use the #715 HO_n3 Truck Assembly Fixture to assist assembly)

Truck Features:

- 26" ribbed back wheels
- Non-magnetic Metal wheels
- Highly Flexible sprung trucks
- Metal SideFrames & Fully Sprung Bolster
- Smooth tracking Free rolling Contoured Insulated Axles
- RP-25 Free rolling wheels

1 Pair . . . **\$10.³⁰**



#716 - Arch Bar Truck
3'-7" Wheel Centers



#717 - Arch Bar Truck
4'-6" Wheel Centers

26" Diameter Ribbed Freight Wheelsets

Kadee® wheel sets are manufactured to the most exacting standards and feature: RP-25 contour, non-magnetic metal wheels and insulated needlepoint axles. (Eight Sets) (Code 110)

Wheelset Features:

- Accurate markings
- Incredible detail True to prototype
- Non-magnetic Metal wheels
- Smooth tracking Free rolling Contoured Insulated Axles
- RP-25 Free rolling wheels
- Needlepoint Axles
- Made in the U.S.A.

8 Sets . . . **\$9.⁷⁵**

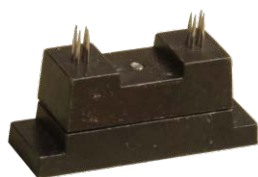


#718 - Ribbed Back Wheels

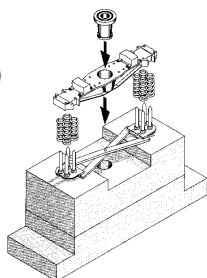
Truck Assembly Fixture

When you buy Kadee® HO_n3 #716 & 717 Trucks be sure to get this wonderful "HELPFUL HAND" The Kadee® Truck Assembly Fixture will save you frustration, lost springs and time.

\$6.⁸⁵ Each



#715 - Truck Assembly Fixture



For use with #716 & #717 HO_n3 Trucks

Coupler Centering Springs

#636 For #711, #712, #714, & #715 Couplers

Truck Springs

#624 For #716, & #717 Trucks



1 Doz. . . **\$1.⁵⁵**



1 Doz. . . **\$1.⁴⁵**

"HGC" Two Piece Fully Equalized Truck

Unassembled "HGC" Freight Truck with 26" Ribbed back wheels.
These are simple and easy to assemble and install.

"HGC" Two Piece, Equalized Trucks: "HGC" High Gravity Compound weighs nearly the same as Metal Trucks but with more detail & easy to assemble design, a 2 piece split bolster design for more efficient truck equalization, reduced axle friction for greater rolling performance. Metal RP-25 wheels with insulated plastic axles.

Included are center bushing adapters for attaching the trucks to various makes of cars such as Blackstone® and Micro-Trains®. These trucks require a flat mounting surface and some models may require trimming and filing of the car's bolster to make a flat surface. The bushings are designed for the original screws or where appropriate 0-48 self-tapping, 0-80 machine screws, or 1mm to 1.25mm metric equivalent.

Assembly Required
Screws not included



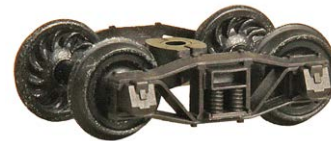
"HGC" Truck Features:

- 26" ribbed back wheels (#718)
- 3 Assorted Mounting Bushing Included
- "HGC" High Gravity Compound Weighs nearly the same as Metal Trucks
- Smooth tracking Free rolling Contoured Insulated Axles
- RP-25 Free rolling wheels
- Patent number 7,434,518 B2
- Made in the U.S.A.

1 Pair . . . **\$11.⁹⁵**



#720 - Arch Bar Truck
3'-7" Wheel Centers



#721 - Arch Bar Truck
4'-6" Wheel Centers



#722
A.S.F.® A-3 Ride-Control® Truck



#723
Andrews (1898) Truck



#724
Bettendorf T-Section Truck



#726
Vulcan Truck

Track Gauge

#342 For Code 55, Code 70 on the other side.
Can also be used for code 66.
Includes a built in track centerline indicator.



\$4.⁰⁵
Each

#342 - Track Gauge